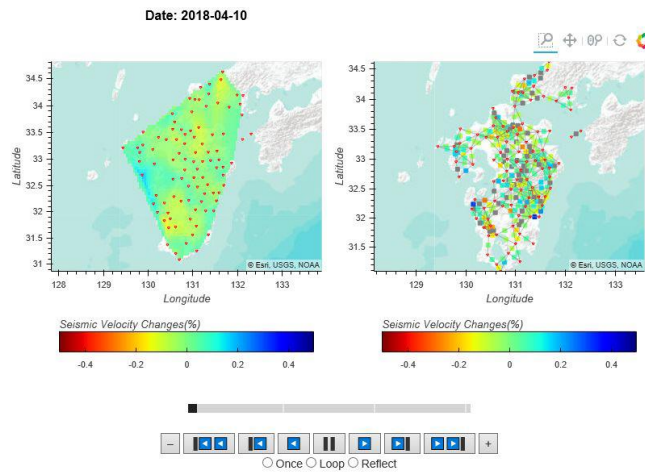


Real-time S-wave velocity variation of Kyushu Island (~5km in depth)

Please use Firefox or Google Chrome or Microsoft Edge

Link: http://45.77.21.237:5006/vel_mon_v2



Monitoring of S-wave velocity (~5km) including the 2016 Kumamoto earthquake

Input file: 20201126_MovieS1

